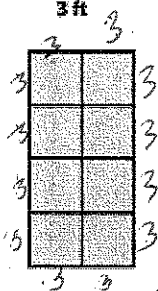



Name

Answer Key

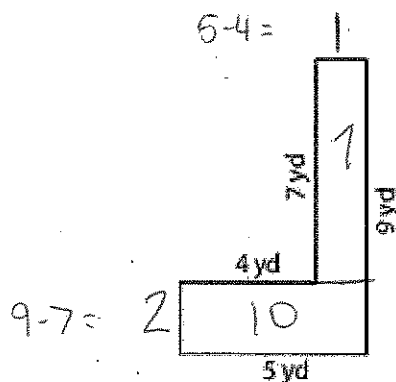
Homework Feb 17 - 21

1.

Scale: Perimeter = 36

$$12 \times 3 = 36$$

2.

Area = 17Perimeter = 28add all
the sides

3. Make a stem and leaf plot for this data.

~~5.8, 6.4, 5.8, 7.5, 6.9, 8.4, 7.6, 6.4, 8.7~~

Stem	Leaf
5	8 8
6	4 4 9
7	5 6
8	4 7

Key: 8|4 =

8.4

4.

			2	.	4
+		4	7	.	9
		5	0	.	3

5.

	1	3	.	5	8
+	4	9	.	6	7
	6	3	.	2	5

6. Ken and Joe attend a health camp at school. Their heights are noted as 4.01 feet and 3.71 feet respectively. What is the difference in height between Ken and Joe?

$$\begin{array}{r} 4.01 \\ - 3.71 \\ \hline 0.30 \end{array}$$

7. A one-year subscription of a science magazine costs \$37.00. If you were to buy 12 issues of the same magazine from a newsstand for a year, you would end up spending \$72.88. How much will you save by opting for a subscription?

$$\begin{array}{r} 72.88 \\ - 37.00 \\ \hline \$ 35.88 \end{array}$$

8. Clara and her friends take an average of 13 hours to mow a community lawn over a weekend. How many hours on an average will they take to mow 14 such lawns?

Handwritten work for problem 8:

$$13 \times 14 = 182$$

10	3
100	30
40	12

182

11. Compare each fraction with $<$, $>$, or $=$.

$0.8 > 0.3$

$0.4 < 0.6$

$0.92 > 0.91$

$0.5 = 0.50$

$0.05 < 0.1$ (don't forget!)

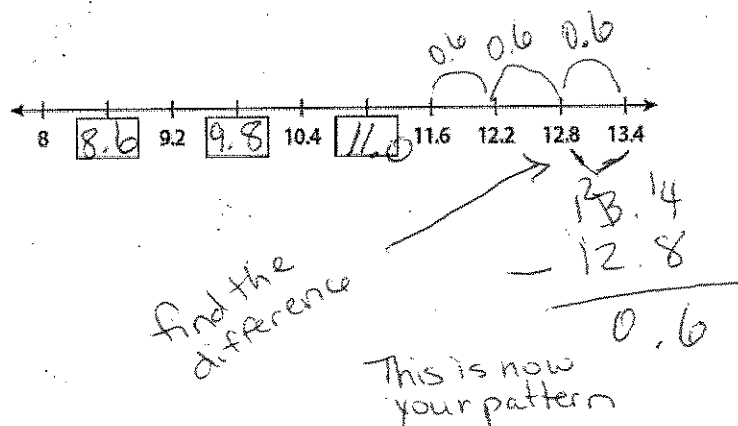
9. A high-rise building is installed with 252 smoke alarms. If each floor is fitted with 3 smoke alarms, how many floors does the high-rise building have?

Handwritten work for problem 9:

$$252 \div 3 = 84$$

84 floors

10. Write the missing decimals in the number line.



12. What is the measure of the angle?

